

ENGINEERING PROCUREMENT CONSTRUCTION

Solutions For Potable & Bio-ethanol,
Breweries, Sugar, Sugar Refinery,
Cogeneration, ZLD System, Water &
Waste Water System & Alcohol Allied Products



A  **wilmar** Group Company

A photograph of an industrial facility, likely a refinery or chemical plant. The main structure is a multi-story building with blue and white panels. Several tall, silver distillation columns with yellow ladders are visible. In the foreground, there are three large, cylindrical storage tanks with domed tops. A red truck is parked on the left side of the image. The sky is clear and blue.

SHAPING THE PLANTS FOR GREEN FUTURE..

WHO WE ARE!

KBK Chem Engineering Private Ltd, Pune

Is India's one of the leading EPC Solutions and Technology provider for Industrial alcohol based plants such as Fuel Ethanol, Ethyl Acetate, Portable Alcohol, Evaporation, ZLD, Sugar & Sugar Refinery with Co-generation plants with Efficient Management along with water and waste water solutions.

KBK is a group company of Wilmar International Ltd, Singapore and is one of the fastest growing sugar & Edible oil companies in India and one of the largest sugar & Edible Oil production companies in the world.

Established in 1997, Headquartered in Pune, India KBK has indigenously developed 'K-Super' technology and is a popular name in the field of distillery with spreading its presence globally with more than 75 projects in many countries like Brazil, Philippines, Ethiopia, Vietnam, Tanzania, Malaysia, Thailand, Srilanka and Myanmar.

KBK has dedicated Innovative technologically driven team of excellent engineers and had accomplished number of EPC projects in India, Asia, and Africa & South America.

KBK has manufacturing facility located in Pune accredited with ASME 'U' and 'R' Stamp, also ISO 9001:2015 Certified Company. Accordance with international standards & codes.

KBK has accomplished many EPC projects with Innovative, integrated solution for alcohol based plants, equipments & products that will enhance the technology for shaping the plants towards green future.

“WE BELIEVE IN PERFECTION”

A large industrial facility, likely a refinery or chemical plant, featuring several tall, cylindrical distillation columns connected by a complex network of pipes and walkways. The structure is multi-storied with yellow safety railings. The background shows a clear sky.

KBK CAPABILITIES

- › KBK is backed by Wilmar International Ltd. Singapore based company with strong financials.
- › Complete in-house Engineering & Design , Manufacturing, Erection
–Commissioning & Services
- › Manufacturing Infrastructure at Workshop having ASME Qualified Welders, Lifting Capacity of 25 MT, and 51000 Sq. Ft. Work Area
- › ASNT Qualified QC Team & Testing Facilities at Workshop
- › ASME Fabrication facility with approx 350 tons for Carbon Steel & Stainless Steel per month
- › Professional and Experienced Team comprising of Alcohol technologist, Chemical engineers, Mechanical engineers, Electrical engineers, instrumentation engineers and Civil Engineers, Bio-technologist, Power plant engineers, Waste Water Treatment engineers etc.
- › Designs as per European, American, British, Japanese & IS Standards



QUALITY ASSURANCE THROUGH MANUFACTURING EXCELLENCE

Quality is a backbone of growth and development and several accreditations received by KBK such as ISO 9001:2015 certification, ASME 'U' Stamp, National Board of Inspectors Certificate for "NB" Stamp, National Board of Inspectors Certificate for 'R' Stamp. We are manufacturing equipments as per National & International Codes like ASME, TEMA, DIN, BIS, IS etc

KBK has fully equipped facilities to manufacture more than 350 metric tons per month capacity with 100% in-house manufacturing, inspection, calibration and testing facility at Pirangut, Pune. The setup is managed by experienced engineers and skilled technicians who make it possible to meet the requirements of high quality workmanship and precision at par with the International Standards.



MANUFACTURING STANDARDS

KBK commits to give superior quality which makes it obligatory in manufacturing process to undergo various quality checks. KBK has been certified with various

Certifications

- › ISO 9001: 2015

Third Party Approvals

- › Bureau Veritas
- › TUV
- › SGS
- › VSI

ASME Codes

- › ASME Section VIII Div. I.
- › ASME Section II,
Part A, B, C & D for Materials.
- › ASME Section V for NDE
- › ASME Section IX for Welding





SERVICES WE OFFER

- › Solutions for Fuel Ethanol, Ethyl Acetate, Portable Alcohol, Evaporation, ZLD , Sugar & Sugar Refinery with Co-generation plants with Efficient Management along with water and waste water solutions.
- › Process plant using feedstock: molasses, sugarcane juice & syrup, maize, cassava, sorghum, coconut tadi and other grains
- › Project Management, Site Construction & erection & Site Commissioning
- › Civil & Infrastructure
- › Training of Customer's Personnel
- › Process, Energy & Plant Audits
- › Retrofitting, modernization of Existing Plants
- › Equipment Business & Spares
- › After Sales Services, Operation & maintenance

CONCEPT TO COMMISSIONING HI-TECH TECHNOLOGY



› **Fermentation**

Batch/ Fed Batch/ Semi Continuous/
Continuous Reactor System

› **Distillation**

Multipressure Vacuum Distillation with
energy integration

› **Evaporation**

Integrated and Stand Alone Evaporation
Technology comprising of Falling Film &
Forced Circulation Evaporators to
concentrate Raw/BMSW/Thin slope from the
route of Cane Syrup/Molasses/Grain upto the

desired Brix as per the disposal mechanism

› **Dehydration**

Molecular Sieve Dehydration Technology
based on “Pressure Swing Adsorption
concept” generates minimum 99.9% Fuel
Ethanol and low cost of production

› **Chemical Process Industry**

EPC Solutions for Ethanol based product
chemical industry like Ethyl
Acetate, Acetic Acid and Butyl Acetate & CO₂.

EXPERTISE



› **Waste Water/Spent Wash Management**

• **Spent Wash Recycle**

30–35% Spent Wash Recycle in molasses operation mode upto 70% in cane juice operation mode and for grain plants
35–40% thin slope recycle

• **Bio-Composting**

Anaerobic and aerobic bacteria together convert residual organic present in spent wash in to valuable bio-fertilizer

• **Bio Gas**

Anaerobic bacteria convert COD & BOD of spent wash into biogas, rich in calorific value



to be used as boiler fuel leading to CDM benefits

• **DDGS Dryer**

Concentrating grain based distillery spent wash up to 90% solid content suitable for animal feed

• **Condensate Polishing Unit (CPU)**

Condensate from evaporation plant and waste water from distillery plant again recycled back to process

› **Equipment Business**

Critical Equipments (U Stamp), equipments for Sugar, Food, Chemical & petrochemical Industries as per ASME Standards

› **Upgradation & Modernization of existing Plants**

Modification of existing plants as per requirement or upgrading the plant capacity with lowest maintenance & operating cost

› **Cogeneration/ Captive power plant – Baggase/Coal/Biomass/Multi fuel based**

› **Other Chemical Plants**

“K-SUPER”

FERMENTATION TECHNOLOGY
FED BATCH MODE



SALIENT FEATURES:

- › Reduction in Process water consumption
- › No Contamination carryover to next fermenter
- › Less Power and steam consumption in distillation
- › Lesser cost of effluent treatment
- › Lesser generation of Effluent
- › Alcohol concentration can increase as per requirement with high brix feed
- › High alcohol production
- › High alcohol concentration irrespective of quality of molasses



SALIENT FEATURES:

- › Recycling of spent wash
- › Reduction in Process water consumption
- › Alcohol concentration can increase as per requirement with high brix feed
- › Less Power and steam consumption in distillation
- › Less chances of Contamination
- › Lesser generation of Effluent
- › High alcohol production
- › Withstand high DS concentration



“K-SUPER” MULTIPRESSURE DISTILLATION TECHNOLOGY

SALIENT FEATURES:

- › Less Steam consumption per liter of alcohol produced
- › Waste heat recovery
- › Steam condensate recycle to boiler
- › Less spent lees generation (50 % spent lees reuse)
- › Integrated Evaporation- No steam consumption, Alcohol vapours are used
- › Export Quality of Rectified spirit, Extra Neutral Alcohol and Ethanol with 99.90% purity
- › Less Technical alcohol generation, improves end product quantity

BENEFITS:

- › Best quality of end products – Rectified Spirit, ENA, EQRS, Ethanol, Ethyl Acetate
- › Maximum yield & efficiency, energy efficient & economical system
- › Less Effluent volume per liter of alcohol



“K – SUPER” DEHYDRATION TECHNOLOGY

SALIENT FEATURES:

- › Easy in operation
- › Less Steam Consumption
- › Less Power Consumption
- › High Purity and Productivity
- › 99.5 % Efficiency



“K – SUPER” MULTIPLE EFFECT SPENT WASH EVAPORATION

SALIENT FEATURES:

- › CIP – Once a Month
- › 50 % Energy saving
- › Low fixed and operating cost
- › Good heat transfer coefficient
- › High Efficiency distributor for optimizing recirculation
- › System Operation At Optimum thermal Efficiency
- › High Efficiency degasser for effective removal of dissolved gases in Biomethanated spent wash
- › Optimization of tube size & passes for less power consumption



“K – SUPER” BIO-DIGESTER

SALIENT FEATURES:

- › 60 to 65 % COD reduction
- › Handles high COD feed
- › High TSS handling capacity
- › Equipment with Vacuum & pressure safety devices
- › Mesophilic operation, hence no external steam
- › High methane content in biogas
- › Ease of operation
- › Optimum hydraulic retention time



CONDENSATE POLISHING UNIT

SALIENT FEATURES:

- › Higher BOD/COD removal efficiency
- › Colorless treated water
- › 90% to 95% water to be reused for cooling tower makeup after treatment
- › Less power requirement
- › Less chemical consumption
- › Ease for operation
- › Less Operation Cost
- › Lower capital cost



DRYER & DDGS PLANT

SALIENT FEATURES:

- › Dryer Vapours recovery to drive Evaporation Plants Reduce steam consumption for Evaporation Section
- › Best product quality
- › Low maintenance cost
- › DDGS Dryer for grain plant effluent management



CRITICAL EQUIPMENTS SUPPLY

KBK has supplied various critical equipments for Palm Oil, Olive Oil, Sugar, and Sunflower Oil Industries.

THE EQUIPMENTS ARE:

- > Citric Acid Tank
- > Charan Tank
- > Filling Tank
- > Lye Oil preparation Tank
- > Lye Oil Retention Vessel
- > Miscela Heater
- > Vacuum Dryer
- > Earth Feed Tank
- > Soap Tankages
- > Stearic Acid Tank
- > Oleo Storage Tank



CRITICAL EQUIPMENT

VAPOR LIQUID SEPERATOR



SS COLUMN



FISH DRYER



COPPER POT STILL



DDGS DRYER



RECTIFIER COLUMN



TRACK RECORD

- › Maximum alcohol concentration achieved up to 12.5 % in molasses route and 14% achieved in grain and cane syrup route
- › Spent Wash generation per liter of alcohol up to 1.55 –1.6 liters in molasses route and 0.7 lit/lit of alcohol on cane syrup route
- › Spent wash recycle on molasses route – 20% and cane syrup route 55% on fed batch fermentation
- › Steam Consumption around 2.75 kg/lit of Alcohol for ENA Mode of Operation in molasses route and developed best heat integration design to achieve 2.55 kg/lit of alcohol
- › Steam Consumption around 2.16 kg/lit of Alcohol for AA Mode of Operation in molasses route/ 2.05 kg/lit of alcohol for AA Mode in Cane syrup route
- › Steam Consumption around 0.95 kg/lit of Alcohol for Stand Alone Evaporation system
- › Potassium Permanganate Test for ENA up to 55–60 minutes
- › Methanol Content up to 2 ppm



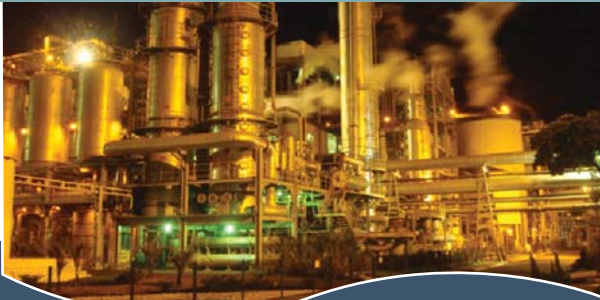


- › Ethanol purity up to 99.90 %
- › Conversion efficiency up to 99% on grain route
- › Fermenter Efficiency up to 91% and 93% on cane syrup and grain route
- › Distillation Efficiency up to 99%
- › Execution of Project with in the cost and time line
- › Accident free project execution with in the time line received a safety award from our Esteemed client
- › Final Product of KBK installed plants are approved by SGS laboratory which meets the standard of export quality ENA
- › Maximum yield , efficiency & energy efficient system
- › Hands on experience of all feed-stocks like Cane juice, grain, corn, cassava, molasses and multi raw material/product plants



OVERSEAS PROJECTS

SHREE RENUKA SUGARS ETHANOL PLANT, BRAZIL



300 KLPD
Ethanol Plant

BING INDUSTRIES LTD., MYANMAR



300 KLPD Grain based Distillery plant with
ZLD & 80 TPH Boiler & 8MW Turbine

EKARAT PATTANA CO LTD, THAILAND



200 KLPD Molasses
Based Distillery Plant

PRO Industries PTE Ltd, UGANDA



130 KLPD Grain
Based Distillery Plant

SAN CARLOS BIO-ENERGY INC, PHILIPPINES



125 KLPD Molasses
Based Distillery Plant

ROXOL BIO-ENERGY CORPORATION, PHILIPPINES



100 KLPD Molasses based Distillery plant
with ZLD & 35 TPH Boiler & 5 MW Turbine

COMPAGNIE SUCRIERE SENEGALAISE



60 KLPD Molasses
Based Distillery plant with ZLD

METAHARA SUGAR FACTORY, ETHIOPIA



50 KLPD Molasses
Based Distillery Plant

INTERNATIONAL BEVERAGE TRADING COMPANY, MYANMAR



40 KLPD Grain
Based Distillery plant

NAGARJUNA INTERNATIONAL LTD., VIETNAM



30 KLPD Molasses
Based Distillery Plant

CHEMICAL INDUSTRIES SDN BHD, MALAYSIA



30 KLPD Molasses
Based Distillery Plant

KILIMANJARO BIO-CHEM LTD, TANZANIA



20 KLPD Molasses
Based Distillery Plant

**ETHIMALE PLANTATION PVT LTD,
SRILANKA**



15KLPD Molasses
Based Distillery Project

**MYANMAR WINERY & DISTILLATY
CO. LTD, MYANMAR**



12 KLPD Grain
Based Distillery plant

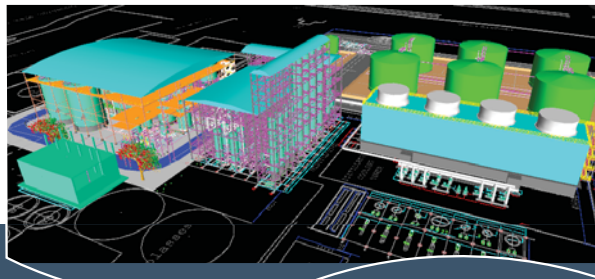
DOMESTIC PROJECTS

SHREE RENUKA SUGARS, HAWALGA



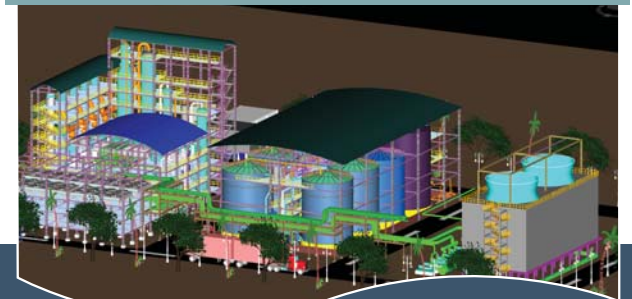
400 KLPD Molasses/cane Juice Distillery Plant
with 75 TPH Incineration Boiler & 8 MW Turbine

**SHREE RENUKA SUGARS LTD
Munoli**



2 * 380 KLPD Molasses/ cane Juice
Distillery Plant with 75 TPH Incineration

SHREE RENUKA SUGARS LTD, ATHANI



250 KLPD Molasses/cane Juice
Distillery Plant with ZLD system

**SHREE RENUKA SUGARS LTD,
ATHANI**



180 KLPD Molasses
based ENA plant

SCM SUGARS LTD, MADHYA PRADESH



60 KLPD RS ENA Ethanol

BARAMATI AGRO LTD, BARAMATI



60 KLPD Molasses
Based Distillery Plant

SHAMANUR SUGARS LTD., HARIHAR



60 KLPD Duel feed Grain + Molasses
Based Distillery Plant with ZLD

**VICTORIA AGRO FOOD
PROCESSING PVT. LTD., LATUR**



60 KLPD Grain based
Distillery plant

HPCL LAURIA, BIHAR



60 KLPD Cane Juice to
Ethanol Plant

**THE SANJIVANI SAHKARI SAKHAR
KARKHANA LTD AHMEDNAGAR**



60 KLPD Molasses
Based Distillery Plant

**BHALKESHWAR SUGAR LIMITED,
BHALKI, KARNATAKA**



60KLPD Ethanol+60 KLPD
Expansion of RS plant

NATURAL SUGARS LIMITED, LATUR



45 KLPD Molasses
Based Distillery Plant

GHODGANGA SSK LTD., SHIRUR



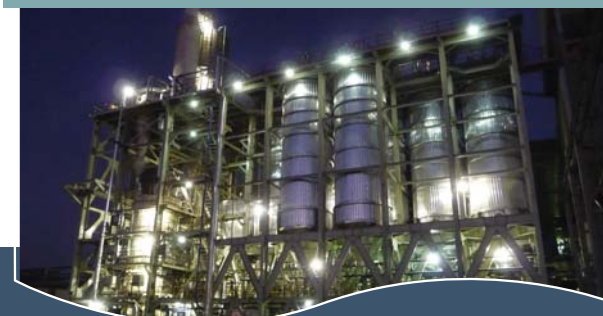
30 KLPD Molasses
Based Distillery Plant

LOKNETE BABURAO PATIL SSK LTD., SOLAPUR



30 KLPD Molasses
Based Distillery Plant

Shree Renuka Sugars Ltd, Kandala



3800 TPD Sugar Refinery





SPENT WASH EVAPORATION PROJECTS

BAJAJ HINDUSTHAN LTD, KINAUNI



1535 m³/Day BMSW Evaporation

SHREE RENUKA SUGARS LTD., HAVALGA



1100 m³/Day Spent wash Evaporation

**ROXOL BIO-ENERGY CORPORATION,
PHILIPPINES**



1000 m³/Day Spent wash Evaporation

Bajaj hindustan ltd, Palia



650 m³/Day BMSW Evaporation

HPCL BIO-FULES LTD, SAUGOLI



600 m³/Day Spent wash Evaporation

HPCL BIO-FULES LTD, LAURIA



600 m³/Day Spent wash Evaporation

CONDENSATE POLISHING

SHREE GANGANAGAR SUGAR MILLS LTD., RJ



SHREE RENUKA SUGARS LTD., HAVALGA



ROXOL BIO-ENERGY CORPORATION,
PHILIPPINES



POWER PLANTS

SHREE RENUKA SUGARS LTD., HAVALGA



75 TPH Incineration Boiler & 8 MW Turbine

ROXOL BIO-ENERGY CORPORATION,
PHILIPPINES



40 TPH Boiler & 2 MW Turbine

SHREE GANGANAGAR SUGAR MILLS LTD., RJ



12 TPH Boiler & 1.4 MW Turbine

BIO METHANATION PLANTS & WATER TREATMENT PLANTS

**SAN CARLOS BIO-ENERGY CORPORATION,
PHILIPPINES**



SHREE GANGANAGAR SUGAR MILLS LTD., RJ



**ROXOL BIO-ENERGY CORPORATION,
PHILIPPINES**



**ROXOL BIO-ENERGY CORPORATION,
PHILIPPINES**



EDIBLE OIL PROJECTS

EDIBLE OIL REFINERY EQUIPMENT



ADANI WILMAR LTD.

EDIBLE OIL REFINERY STORAGE TANKS



ADANI WILMAR LTD.

EDIBLE OIL REFINERY PIPING



ADANI WILMAR LTD.

70KL EDIBLE OIL TANK



ADANI-WILMAR LTD , VIDISHA-MP

25KL LICITHIN TANK



ADANI-WILMAR LTD, VIDISHA-MP

50MT CRYSTALLIZER



ADANI WILAMR LTD, MUNDRA-GUJRAT



ON GOING DISTILLERY PROJECTS

CUSTOMER	SCOPE	Year	Products	Type of Construction
K.P. Biofuels Pvt Ltd, MP	60 KLPD Grain based Distillery plant with ZLD & 20 TPH Boiler & 2.5 MW Power Plant	2022-2023	RS/ETHANOL	EPC
Kumbhi Kasari SSK	30 KLPD MSDH Plant Standalone Multiple Effect Evaporation Plant	2022-2023	ETHANOL	EPC
Bing Industry Limited, Myanmar (A Group Company of Bing Enterprises Ltd, an US Based Company)	300 KLPD Grain based Distillery plant with ZLD & 80 TPH Boiler & 8 MW Power Plant	2022-2024	ENA/ETHANOL	Turnkey
Pro Industries PTE Ltd, Uganda (A Group Company of Bing Enterprises Ltd an US Based Company)	130 KLPD Grain based Distillery plant with ZLD & 40 TPH Boiler & 4 MW Power Plant	2021-2023	ENA/ETHANOL	Turnkey
Shree Renuka Sugars, Munoli	2 * 380 KLPD Molasses/ cane Juice Distillery Plant with with 75 TPH Incineration Boiler & 10 MW POWER PLANT & ZLD system	2021-2022	RS/ETHANOL	EPC
Shree Renuka Sugars, Athani	250 KLPD Molasses/cane Juice Distillery Plant with ZLD system	2021-2022	RS /ETHANOL	EPC
Vista Invest (P) Ltd, Zambia	600 m3/day Raw / BMSW / Thin slop spent wash Evaporation Plant	2021-2022	EVAPORATION	EPC
Indo-Nuclear Energy Pvt Ltd , Satna , MP	60 KLPD Grain based Distillery plant with ZLD & 20 TPH Boiler & 2.5 MW Power Plant	2021-2022	RS/ETHANOL	EPC
NSP Distillery Pvt. Ltd. Bagalkot, Karnataka	60 KLPD Grain based Juice Distillery Plant with ZLD system	2021-2022	ENA /ETHANOL	EPC

INTERNATIONAL DISTILLERY PROJECTS

CUSTOMER	SCOPE	Year	Products	Type of Construction
Ekarat Pattana Co.,Thailand	200 KLPD Molasses Based Distillery Plant	2010	RS/ETHANOL	EPC
San Carlos Bio-Energy Corporation,Philippines	125 KLPD Molasses Based Distillery Plant	2010	ENA/ETHANOL	EPC
Roxol Bio-Energy Corporation,Philippines	100 KLPD Molasses based Distillery plant with ZLD & 35 TPH Boiler & 5 MW Turbine	2011	ENA/ETHANOL	Turnkey
Cagnie Sucriere Senegalaise,Senegal	60 KLPD Molasses based Distillery plant with ZLD	2009	ENA	Turnkey
Metahara Sugar Factory,Ethiopia	50 KLPD Molasses Based Distillery Plant	2011	ENA/ETHANOL	EPC
Chemical Industries (Malaya) Sdn Bhd.,Malaysia	30 KLPD Molasses Based Distillery Plant	2007	ENA	Turnkey
International Beverage Trading Co., Myanmar	40 KLPD Grain based Distillery plant	2008	ENA/ETHANOL	EPC
Nagarjuna International (Vietnam) Ltd., Vietnam	30 KLPD Molasses Based Distillery Plant	2009	ENA	Turnkey
Kilimanjaro Bio-Chem Ltd., Tanzania	20 KLPD Molasses Based Distillery Plant	2010	ENA	EPC
Myanmar Winery & Distillery Co. Ltd., Myanmar	12 KLPD Grain based Distillery plant	2010	ENA	EPC
Ethimale Plantation (Pvt.) Ltd.,Srilanka	15 KLPD Molasses Based Distillery Plant	2021-2022	ENA	EPC

DOMESTIC DISTILLERY PROJECT

CUSTOMER	SCOPE	Year	Products	Type of Construction
----------	-------	------	----------	----------------------

MAHRASHTRA

Baramati Agro Ltd., Baramati	60 KLPD Molasses Based Distillery Plant	2008	ENA	EPC
Victoria Agro Food Processing Pvt. Ltd., Latur	60 KLPD Grain based Distillery plant	2010	ENA	Turnkey
Sanjivani S S K Ltd., Kopergaon	60 KLPD Molasses Based Distillery Plant	2012	EQRS	EPC
Sanjivani S S K Ltd., Kopergaon	60 KLPD Molasses Based Distillery Plant	2014	EQRS/ENA	EPC
Sanjivani S S K Ltd., Kopergaon	60 KLPD MSDH Plant & Fermentation upgradation	2015	Ethanol	EPC

CUSTOMER	SCOPE	Year	Products	Type of Construction
Loknete Baburao Patil S.S.K.Ltd.,Solapur Dhaval Pratapsinha Mohite	60 KLPD MSDH Plant	2018	Ethanol	EPC
Patil Agro Industries Ltd., Akluj	45 KLPD Grain Based Distillery Plant with ZLD	2012	ENA	Turnkey
Jubilant Organosys Limited, Neera	45 KLPD Molasses Based Distillery Plant	2012	ENA	EPC
Natural Sugars Limited, Latur	45 KLPD Molasses Based Distillery Plant	2011	ENA	Turnkey
Loknete Baburao Patil S.S.K.Ltd.,Solapur	30 KLPD Molasses Based Distillery Plant	2010	ENA	Turnkey
Ghodganga S.S.K. Ltd.,Shirur	30 KLPD Molasses Based Distillery Plant	2011	ENA	EPC
Konkan Agro Marine ind. pvt. Ltd. Babargaon, Aurangabad.	40 KLPD Grain Based Distillery Plant	2013	ENA	EPC

KARNATAKA

Shree Renuka Sugars, Athani	400 KLPD Molasses/cane Juice Distillery Plant with 75 TPH Incineration Boiler & 8 MW Turbine	2019	ENA/ETHANOL	Turnkey
Shree Renuka Sugars, Hawalga	350 KLPD Molasses/cane Juice Distillery Plant with 75 TPH Incineration Boiler & 8 MW Turbine	2020	ENA/ETHANOL	Turnkey
Shree Renuka Sugars, Athani	200 KLPD Molasses/cane Juice Distillery Plant with ZLD	2021-2022	ENA/ETHANOL	EPC
Shree Renuka Sugars, Munoli	100 KLPD Molasses/cane Juice Distillery Plant with ZLD	2021-2022	ENA/ETHANOL	EPC
SCM Sugars Ltd., (NSL Sugars Ltd.) Mandya	60 KLPD Molasses Based Distillery Plant	2011	ENA	EPC
Kartika Agro Industries Ltd., Bagalkot	60 KLPD Duel feed Grain + Molasses Based Distillery Plant with ZLD	2011	ENA	Turnkey
Shamanur Sugars Ltd., Harihar	60 KLPD Duel feed Grain + Molasses Based Distillery Plant with ZLD	2011	ENA	Turnkey
GMR Industries Ltd., Haliyal	45 KLPD Molasses Based Distillery Plant	2010	ENA	EPC

CUSTOMER	SCOPE	Year	Products	Type of Construction
ANDHRA AND TAMILNADU				
Empee Distilleries Limited,Chennai	70 KLPD Grain Based Distillery Plant	2010	ENA	EPC
Krishnaveni Sugars Ltd., Hyderabad	60 KLPD Duel feed Grain + Molasses Based Distillery Plant	2012	ENA/ETHANOL	EPC
GMR Industries Ltd., Vizag	50 KLPD Molasses Based Distillery Plant	2013	ENA	EPC
Kothari Sugars & Chemicals Limited, Trichi	45 KLPD Molasses Based Distillery Plant	2012	ENA	EPC
Gayatri Sugars Ltd., Kamareddy	45 KLPD Molasses Based Distillery Plant	2007	ENA	EPC
MADHYA PRADESH AND UTTAR PRADESH				
Dhampur Sugar Mills Ltd., Dhampur	180 KLPD Molasses Based Distillery Plant	2006	ENA	EPC
Gwalior Distilleries Ltd., Gwalior	130 KLPD Duel feed Grain + Molasses Based Distillery Plant with ZLD	2007	ENA	EPC
Dhampur Sugar Mills Ltd., Asmoli	105 KLPD Molasses Based Distillery Plant	2008	ENA	EPC
Uttam Sugars Ltd., Bijnor	75 KLPD Molasses based Distillery Plant	2008	ENA	EPC
Kisan Sahakari Chini Mills Ltd Kaymganj UP	20 KLPD MSDH Plant	2016	ETHANOL	EPC
PUNJAB AND BIHAR				
HPCL Lauria,Bihar	60 KLPD Cane Juice Based Distillery Plant	2012	ETHANOL	Turnkey
HPCL Saugoli,,Bihar	60 KLPD Cane Juice Based Distillery Plant	2012	ETHANOL	Turnkey
Malbros International Ltd., Punjab	54 KLPD Grain Based Distillery Plant with ZLD	2011	ENA	Turnkey
RAJASTHAN AND GUJRAT				
GNFC Ltd., Bharuch	150TPD Ethyl Acetate Plant	2012	Ethyl Acetate	EPC
Rajasthan State Ganganagar Sugar Mill Ltd.,Rajasthan	30 KLPD Duel feed Grain + Molasses Based Distillery Plant with ZLD	2015	EQRS	Turnkey

MULTI-EFFECT EVAPORATION PLANTS

CUSTOMER	SCOPE	Year	Type of Construction
Ekarat Pattana Co. Ltd., Thailand	2000 m3/Day BMSW Multi-effect Evaporation Plant	2010	EPC
San Carlos Bio-Energy Corporation,Philippines	1000 m3/Day BMSW Multi-effect Evaporation Plant	2010	EPC
Roxol Bio-Energy Corporation,Philippines	800 m3/Day BMSW Multi-effect Evaporation Plant	2011	Turnkey
Campagnie Sucriere Senegalaise,Senegal	550 m3/Day Integrated & Stand Alone BMSW Multi-effect Evaporation Plant	2009	Turnkey
Metahara Sugar Factory,Ethiopia	500 m3/Day Integrated & Stand Alone BMSW Multi-effect Evaporation Plant	2011	EPC
Shree Renuka Sugars Ltd., Athani,Karnataka	2200 m3/Day Integarted + Stand Alone Multi Effect Evaporation Plant	2020	Turnkey
Shree Renuka Sugars Ltd., Havalga, Karnataka	2200 m3/Day Integarted + Stand Alone Multi Effect Evaporation Plant	2020	Turnkey
Shree Renuka Sugars Ltd., Munoli, Karnataka	2450 m3/Day Integarted + Stand Alone Multi Effect Evaporation Plant	2021-2022	Turnkey
Bajaj Hindusthan Sugars Ltd, Kinauni, Uttar Pradesh	1535 m3/Day BMSW Multi-effect Evaporation Plant	2019	EPC
Bajaj Hindusthan Sugars Ltd, Palia, Uttar Pradesh	650 m3/Day BMSW Multi-effect Evaporation Plant	2020	EPC
Pearl Distillery Ltd.-Singrayakonda			
Krishnaveni Sugars Ltd., (group company of NSL Sugars Ltd.), Hyderabad	650 m3/Day RSW Multi-effect Evaporation Plant 600 m3/Day RSW Multi-effect Evaporation Plant	2009 2012	EPC EPC
HPCL Biofuels Ltd., Lauriya,Bihar	600 m3/Day RSW Multi-effect Evaporation Plant	2012	Turnkey
HPCL Biofuels Ltd., Sugauli,Bihar	600 m3/Day RSW Multi-effect Evaporation Plant	2012	Turnkey
Malbros International Ltd., Punjab	600 m3/Day RSW Multi-effect Evaporation Plant	2011	EPC
Gayatri Sugars Ltd.-Kamareddy,Andhra Pradesh	600 m3/Day RSW Multi-effect Evaporation Plant	2007	EPC
Rajasthan State Ganganagar Sugar Mill Ltd.,Rajasthan	650 m3/Day BMSW Multi-effect Evaporation Plant	2017	Turnkey

CUSTOMER	SCOPE	Year	Type of Construction
Hutatma S S K Ltd.,Sangali	300 m3/Day BMSW Multi-effect Evaporation Plant	2018	EPC
Y M Krishna.,Karad,Sangli	300 m3/Day RSW Multi-effect Evaporation Plant	2018	EPC
Kranti SSK Ltd.,Kundal,Sangli	325 m3/Day RSW Multi-effect Evaporation Plant	2017	EPC
Konkan Agro Marine ind. pvt. Ltd. Babargaon, Aurangabad.	300 m3/Day RSW Multi-effect Evaporation Plant	2012	EPC
NCS Sugars Ltd. Kakinada,Andhra Pradesh	200 m3/Day RSW Multi-effect Evaporation Plant	2011	EPC

CUSTOMER	Capacity	Year	Type of Construction
----------	----------	------	----------------------

CPU			
Shree Renuka Sugars Limited, Athani	2800 m3/day	2020	Turnkey
Shree Renuka Sugars Limited, Hawalga	2800 m3/day	2020	Turnkey
HPCL Biofuels Limited-Lauriya	1590 m3/day	2012	Turnkey
HPCL Biofuels Limited-Sugauli	1590 m3/day	2012	Turnkey
Kartik Agro Industries Pvt. Ltd., Bagalkot	840 m3/day	2011	EPC
Roxol Bioenergy Corporation,Philippines	750 m3/day	2011	EPC
Dhaval Pratapsinh Mohite Patil			
Agro Industries Ltd.,Akluj	382 m3/day	2012	EPC
Rajasthan State Ganganagar			
Sugar Mills Limited.,Rajasthan	350 m3/day	2017	Turnkey
Metahara Sugar Factory,Metahara	325 m3/day	2011	EPC

BIO-DIGESTOR			
Shree Renuka Sugars Limited, Athani	30000 m3	2020	Turnkey
Shree Renuka Sugars Limited, Hawalga	10000 m3	2020	Turnkey

CUSTOMER	SCOPE	Year	Products	Type of Construction
HPCL Biofuels Limited–Lauriya	10000 m3	2012	2012	Turnkey
HPCL Biofuels Limited–Sugauli	10000 m3		2012	Turnkey
Roxol Bioenergy Corporation,Philippines	7800 m3		2011	EPC
Vaijanath SSK,Parali,Maharashtra	4500 m3		2012	EPC
Rajasthan State Ganganagar	7800 m3		2017	Turnkey
Sugar Mills Limited.,Rajasthan				

SUGAR & SUGAR REFINERY PROJECT				
CUSTOMER	SCOPE	Year	Products	Type of Construction
Ongoing				
MSM Sugar Refinery	Consultancy to improve the plant operation	2022–2024	Sugar	–
JOHOR, Malaysia	to achieve best energy saving and recovery			
PT Jawamanis Refanasi	Supply, Febrication, Erection & commissioning			
Cilegaon, Indonesia	of Refinery for Capacity expansion to 1200 TPD	2022–2023	Sugar	EPC
Shree Renuka Sugars Limited	Sugar Godowns supply, fabrication & erection			
Haldia, West Bengal, India				
2500 TPD Sugar Refinery	Expansion of boiling house to capacity by 3000 TCD.	2022–2023	Sugar	Turnkey
Shree Renuka Sugars Limited,				
Munoli, Karnataka India				
10000 TCD Integrated Refinery	Supply, Erection and Commissioning of boiling house equipment for increasing the plant capacity	2022–2023	Sugar	EPC
Shree Renuka Sugars Limited,				
Panchaganga, Maharashtra, India				
5000 TCD Sugar Plant	Supply, Erection and Commissioning of	2022–2023	Sugar	EPC
Gokak Sugars Limited,				

CUSTOMER	SCOPE	Year	Products	Type of Construction
Kolavi, Karnataka, India 5000 TCD Sugar Plant Shree Renuka Sugars Limited, Kandala, Gujrat, India 3800 TPD Sugar Refinery	boiling house equipment for increasing the plant capacity Supply, Erection and Commissioning of Conditioning Silos for Refined Sugar 4000 Tons Capacity	2022-2023	Sugar	EPC
Shree Renuka Sugars Limited, Pathari, Maharashtra, India 3800 TPD Sugar Refinery	Expansion of boiling house to capacity by 3000 TCD.	2022-2023	Sugar	Turnkey
Completed				
Shree Renuka Sugars Limited Haldia, West Bengal, India 2500 TPD Sugar Refinery	Supply, Erection, Febrication & Commissioning of Project	2013-14	Sugar	EPC
Shree Renuka Sugars Limited Haldia, West Bengal, India 2500 TPD Sugar Refinery"	Refurbishing of entire refinery & Power Plant affected due to cyclone.	2020 - 21	Sugar	EPC
Shree Renuka Sugars Limited Havalaga, Karnataka, India 9000 TCD Sugar Plant"	Complete Plant Expansion to 9000 TCD	2018 - 19	Sugar	Turnkey
Shree Renuka Sugars Limited, Kandala, Gujrat, India 3800 TPD Sugar Refinery"	Supply, Febrication, Erection & Commissioning of Plant Equipments	2018 - 19	Sugar	EPC
Shree Renuka Sugars Limited, Munoli, Karnataka India 10000 TCD Sugar Refinery"	Supply, Febrication, Erection & Commissioning of Sugar Plant Equipments for expansion and increase in Refinery capacity from 500 TPD to 1000 TPD. Expansion of power plant	2018 - 19	Sugar	Turnkey

OUR PATRONAGES

wilmar



Baramati Agro Limited
बारामती अग्रो लिमिटेड



Gwalior Distilleries Ltd.



THE SANJIVANI
TAKLI SSK LTD



CROSSING THE BOUNDARIES... ...IN PURSUIT OF EXCELLENCE





KBK CHEM ENGINEERING PVT. LTD.

GAT NO.540, AT POST- KASAR AMBOLI, URAWADE ROAD,
PIRANGUT,TAL - MULSHI, DIST - PUNE - 412 111.



+91 9158287000 / 7558604455



sales@kbk-chem.com



www.kbk-chem.com